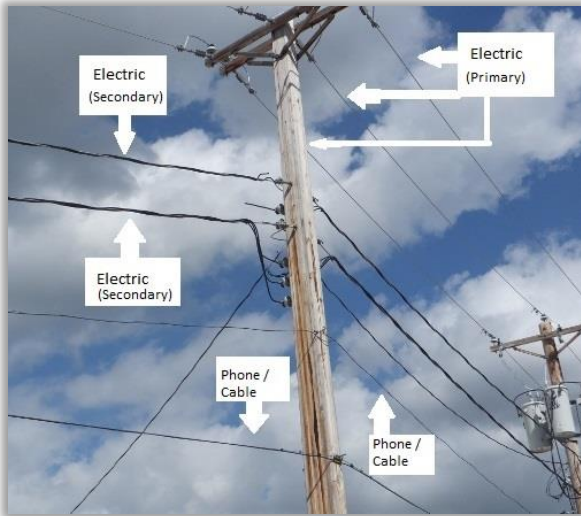


Know Your Lines!

Basic knowledge of the lines on a power pole will help you to know who to call and get it fixed right away!



Things to know:

- Electrical lines are always at the top or near the top of the pole. Cable and telephone lines will be closer to the bottom of the pole. Look at the example to the side to see the difference.
- Primary electrical lines look very similar to phone and cable lines but they are located at the very top of the pole.
- Secondary electrical lines are 3 wires wound together; two are black and one is silver.
- Phone and cable lines look very similar to each other.

If you see any of these lines down, **DO NOT APPROACH THE LINE**. Do not take the chance. If you can see whether or not it was a top or lower line, call the respective company to take care of the issue.

Electric: Syracuse Utilities

402-269-2173

Cable: Zito Cable

1-800-365-6988

Phone: Windstream

1-866-445-5882

